



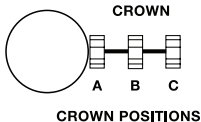
JULES JURGENSEN

WATCH INSTRUCTIONS & 1 YEAR LIMITED WARRANTY

## SETTING THE WATCH:

These instructions apply to a variety of watch styles. To change the Time, Day or Date on your analog watch, simply follow the accompanying instructions, according to your specific style.

- A. **NEUTRAL POSITION:** This is the normal operating position of the watch in which the Crown is free to turn in either direction without any effect on the time.
- B. **POSITION TO SET THE DATE**  
(if your watch has a Date window)
- C. **POSITION TO SET THE TIME**



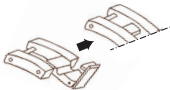
## SETTING THE TIME ON STANDARD ANALOG WATCH STYLES:

NOTE: The “standard” style has no Calendar or Day/Date “windows” on the dial, and unlike the above diagram, has only 2 Crown positions - Closed (**'A'**) and Open (**'C'**).

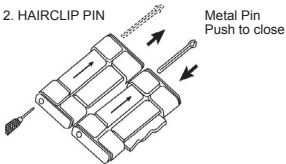
To change the time, simply pull out the Crown all the way until it stops (position **'C'**). Rotate the Crown in either direction until the desired time is obtained. Push the Crown back in all the way (position **'A'**) to re-engage time keeping. (The Second hand will begin to move, if your watch has a second hand).

## DIAGRAMS FOR ADJUSTABLE BRACELET WATCHES:

### 1. CLASP EXTENDER

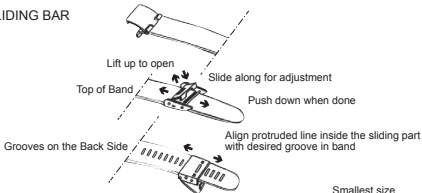


### 2. HAIRCLIP PIN



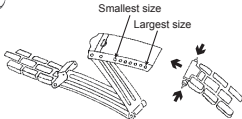
Turn over the watch to look for arrows on the underside of the links, showing you which way you need to push the pin out of the link. Use a pin remover tool to push out the "Hairclip Pin" from the hole located on the side of the link. After the links are removed, simply follow these steps in reverse to re-assemble the bracelet.

### 3. SLIDING BAR



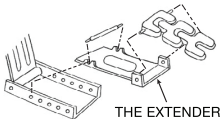
### 4. FOLD-OVER BUCKLE

Compress the push pin, and put the ends into the suitable holes along the buckle.



EXTENDER TO MAXIMIZE THE SIZE OF THE FOLD-OVER CLASP FOR A LARGER WRIST  
(For a Smaller Size Wrist discard the Extender)

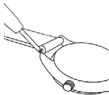
If your watch did not come with the Extender, please call with the style number (which is engraved on the case back) and the Extender will be shipped to you.



## 5. REMOVING THE BAND FROM YOUR WATCH

Lay your watch with the face down (preferably on a cloth to prevent scratching your watch). You will need a sharp point or "Spring Bar Tool" to perform the following steps:

1. Insert the sharp point between the strap and watch lug to release the strap from case.
2. Once the Spring Bar is detached you can remove your strap. To reattach, depress Spring Bar and insert into hole on the inside of the watch case lug.





Dear Customer:

Help your watch/jewelry retailer protect our environment by properly recycling the button cell battery in your watch. Professional jewelers and watch retailers are best equipped to replace the battery in your watch without damage to the watch case and movement inside. They have the specialized tools and experience to do the right job. Inexperienced people can scar the case and damage the water resistant seal - voiding your warranty.

It is important to recycle your watch battery in an environmentally safe way. You need to recycle your watch battery properly. Your professional watch/jewelry retailer is the best person to do this for you. These professionals collect used batteries and recycle them through licensed waste management companies. Do our environment and your watch a favor. Ask your watch/jewelry professional to replace your battery when it expires.

## CHANGING THE BATTERY:

Replace the batteries when the watch becomes slow or does not operate. It is not necessary to return your watch to **EGC** for battery replacement. However, it is recommended that you bring your watch to a local jeweler. Some important facts to remember when changing the battery are: (1) before removing the battery, be sure to denote polarity so that the new battery is installed in exactly the same way and (2) replace with same or equivalent.

**NOTE: BATTERIES ARE NOT COVERED UNDER THE WARRANTY. DO NOT DISPOSE OF BATTERY IN FIRE. DO NOT RECHARGE. DO NOT MIX OLD AND NEW BATTERIES. KEEP LOOSE BATTERIES AWAY FROM CHILDREN.**



## 1 YEAR LIMITED WARRANTY:

**EGG** warranties that it will repair or replace any failure due to defects in materials and/or workmanship free of charge. This warranty is provided by **EGC**, not by the dealer from whom it was purchased. This limited warranty does not apply to normal wear and tear, misuse or abuse and excludes the battery, case, strap, crystal or bracelet. This warranty does not cover any failure to function properly due to neglect such as water immersion or severe shock. Should warranty service be required, please wrap and carefully pack your timepiece and send via insured parcel post to:

**EGC SERVICE CENTER, 6015 LITTLE NECK PARKWAY, LITTLE NECK, NY 11362.**

Include a brief note with your name and address, description of the problem and a copy of your sales receipt. Enclose \$7.00 to cover the cost of return postage and handling.

“Do not send cash. We accept checks, money orders or Visa and Mastercard.”

Card Holder Name: \_\_\_\_\_

M.C. # \_\_\_\_\_ EXP. DATE \_\_\_\_\_

VISA # \_\_\_\_\_ CCV # \_\_\_\_\_