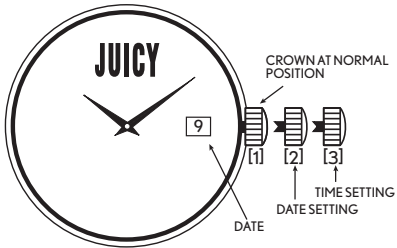




**WATCH INSTRUCTIONS &
2-YEAR LIMITED WARRANTY**



SETTING THE TIME

Pull out Crown all the way until it stops (position '3'). The second hand will stop. Rotate the Crown in either direction until desired time is obtained. Push Crown back in all the way (position '1') to re-engage time keeping. Second hand will begin to move.

NOTE: Never pull the Crown when the watch is wet.

SETTING THE TIME, DAY AND DATE

If your watch has a Date or a Day and Date Window, pull the Crown out to position '2' and turn the Crown in both directions until the Date showing is the day before the desired Date. Pull out Crown all the way (position '3') and turn the Crown to advance time. When midnight is reached, the Date will advance to the desired Date. Continue to turn the Crown until desired time is obtained. Push the Crown back in all the way until it stops (position '1') to re-engage time keeping.

WATER RESISTANCE

If your watch is water resistant, the watch is tested to be water resistant to 3-5 atmospheres (100-165 feet).

NOTE: Over time, the gaskets of the case may become worn and reduce the water resistance of the watch. A trained specialist should change the gaskets and the O-ring each time the battery is changed. To avoid any unwanted condensation, watches of all specifications (water resistant or not) should not be exposed to extreme temperatures such as cold or heat.

CHANGING THE BATTERY

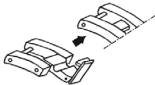
Replace batteries when the watch becomes slow or does not operate, the readout darkens or does not appear or the backlight fails. Replace with same or equivalent.

NOTE: Battery change should be performed by a qualified technician who should also check the condition of the gaskets at the same time.

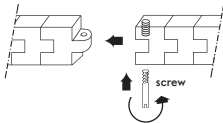
BATTERIES ARE NOT COVERED UNDER WARRANTY.

DIAGRAMS FOR ADJUSTABLE BRACELET WATCHES

1. CLASP EXTENDER

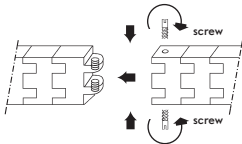


2. ONE SCREW SYSTEM

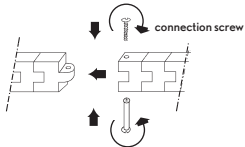


3. TWO SCREW SYSTEM

Screw in one at a time



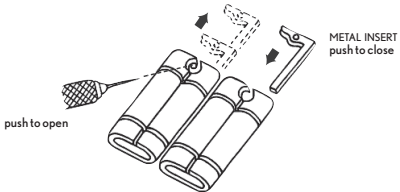
4. CONNECTION SYSTEM



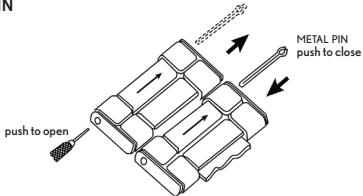
Use 2 screwdrivers.

Hold one side steady before turning the screw.

5. METAL INSERT



6. HAIRCLIP PIN



Turn over the watch to look for arrows on the underside of the links, showing you which way you need to push the pin out of the link. Use a pin remover tool to push out the “hair clip pin” from the hole located on the side of the link. After the links are removed, simply follow these steps in reverse to re-assemble the bracelet.

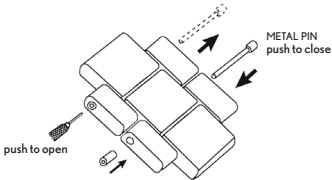
7. PIN & TUBE 1



Side view "B" of Link

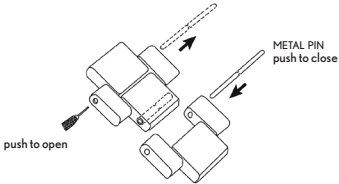


Side view "A" of Link



Check the side edge of the watch link, to determine which side of the link is "A" or "B". Take a pin remover tool and push out the pin from the hole located on side "B". After the desired links are removed, simply follow these steps in reverse to re-assemble the bracelet.

8. PIN & TUBE 2



In order to adjust links for this watch construction, you must switch the pin on the tool kit to the longest pin (approximately 10mm long) found under the tool kit. Then use the pin remover tool to push out the pins from either side of the links. After the desired links are removed, simply follow these steps in reverse to re-assemble the bracelet.

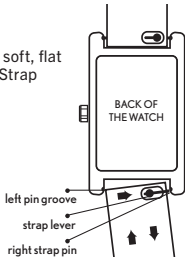
TO CHANGE YOUR BOXSET STRAPS:

CHANGING THE STRAPS

To remove the Strap, place the watch face down on a soft, flat surface. Slide the Strap Lever to the left and pull the Strap away from the watch.

TO INSERT THE NEW STRAP

Set Strap Pin into the Left Pin Groove. Slide the Strap Lever to the left. Align the Strap so the Right Pin “clicks” into the Right Pin Groove when the Lever is released.



Dear Customer:

Help your watch/jewelry retailer protect our environment by properly recycling the button cell battery in your watch. Professional jewelers and watch retailers are best equipped to replace the battery in your watch without damage to the watch case and movement inside. They have the specialized tools and experience to do the job right. Inexperienced people can scar the case and damage the water resistant seal – voiding your warranty. It is important to recycle your watch battery in an environmentally safe way. Watch batteries contain very small amounts of mercury, which is required to prevent corrosion of the battery and damage to your watch. There is no danger to you or your watch from the mercury because it is in the sealed battery. But you need to recycle your watch battery properly. Your professional watch/jewelry retailer is the best person to do this for you. These professionals collect used batteries and recycle them through licensed waste management companies.

Do our environment and your watch a favor. Ask your watch/jewelry professional to replace your battery when it expires.

**TO RETURN YOUR WATCH FOR SERVICING:
RETURN IT TO JUICY COUTURE WATCH CO. OR TO AN AUTHORIZED SERVICE CENTER;
IT SHOULD NOT BE RETURNED TO PLACE OF PURCHASE.**

Carefully pack your watch in a sturdy box (do not send in a gift box for same will not be returned) and mail to:

**JUICY BY JUICY COUTURE
6015 Little Neck Parkway
Little Neck, NY 11362
ATTN: Service Dept.
Tel: +1 718 482-4195**

**Clarity Ltd.
Flat A - B, 12/F,
Sing Mei Industrial Building
29 - 37 Kwai Wing Road
Kwai Chung, N.T. Hong Kong
Tel: 852.2424.2211
Fax: 852.2424.2077**

Because of possible loss, we recommend that you insure your watch, return receipt requested, when using the mail. If your watch requires cleaning, lubrication, battery changing, or needs a crystal replaced, JUICY by JUICY COUTURE approved Service Centers may be available in your area. These repair facilities use JUICY by JUICY COUTURE parts and components to assure quality and future performance. Free estimates are available in advance, should you need servicing or repairs not covered under the warranty. Repairs covered under the warranty may require proof of purchase, so retain the purchase receipt. For further information regarding JUICY by JUICY COUTURE approved Service Stations and locations, please call the Service Centers listed above.

2 YEAR LIMITED WARRANTY

This JUICY by JUICY COUTURE watch is warranted to you, the owner, for 2 years against all defects in material or workmanship. This warranty does not apply to normal wear and tear or abuse and excludes batteries, case, strap, crystal, or bracelet. In the event of a defect or malfunction of the movement within this period it will be repaired or replaced at our option. No additional charge will be made unless additional servicing is necessary for reasons beyond our control such as accident, misuse, neglect or replacement of parts not warranted is required such as case, crystal, strap, bracelet or batteries in which event a moderate charge will be made. The aforementioned remedy is exclusive. JUICY by JUICY COUTURE shall not be liable for any incidental or consequential damages. Should any other part of your watch require repair, please use our Service Centers for quick and inexpensive repairs on your watch. This warranty gives you specific legal rights and you may also have other rights which may vary from country to country.

NOTES:

* SPECIFICATIONS SUBJECT TO CHANGE WITHOUT PRIOR NOTICE FOR PRODUCT IMPROVEMENT,
DESIGN MAY VARY DEPENDING ON THE MODEL.



